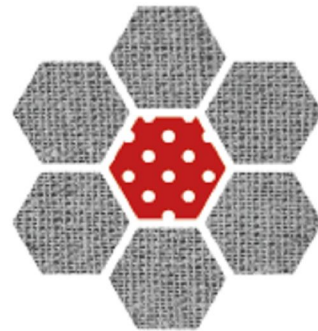


More

karen.mars01@



# sew many ways.

to organize | to sew | to create

[Home](#)   [About Me](#)   [Advertising](#)   [Before and Afters](#)   [Blogging Tips](#)   [Christmas](#)   [Craft Projects](#)  
[Great Ideas](#)   [Organizing](#)   [Quilt Blocks](#)   [Recipes](#)   [Recycling Projects](#)   [Sewing Projects](#)   [Sew](#)

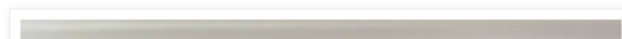
FRIDAY, MAY 1, 2009

## *Car Caddy Tutorial...*

I've finally put together the tutorial for the **car caddy** that I made for our car trip to Florida. I always take hand sewing with me and this is just a great little holder for all my sewing needs. (click the link for the original post and pictures). The instructions are more of a guide, because every one's cup holder and can might be a little different in size and shape. I'll give you the measurements that I used, but remember to check the size of yours first.

space space

space





#### Materials Needed:

- cup holder-the kind that hangs from the car window
- recycled can- mine was a pineapple can. (most cans now do not have a sharp edge on them, but just check to make sure.)
- fabric

#### ABOUT ME



**Karen from**  
Rhode Island,

Hello and welcome!  
My name is K

wonderful man for over 28  
two beautiful daughters. They  
graduated from college and  
wonderful lives of their own  
them home, but they still keep  
dental hygienist by day and  
love to blog, sew, quilt, craft  
furniture, shop in consignment  
tea! Thanks for joining me on  
journey...I have sew many

[View my complete profile](#)

- optional trim- ric rac or ribbon
- tape measure

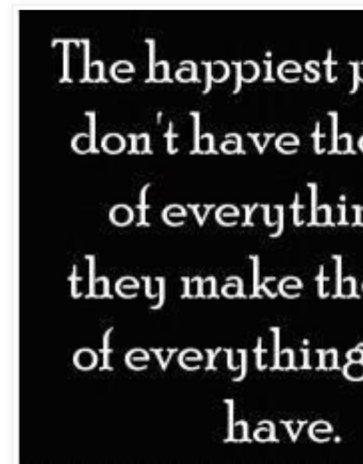


Instructions:

Measure around the can...not too tight. Add 1 inch for seam allowance. My example: picture below is 11 1/2" plus 1" equals 12 1/2". This measurement will be the width of the body and the width of the pocket.



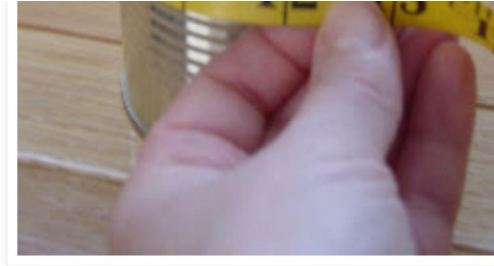
WORDS TO LIVE BY...



THANKS FOR STOPPING BY ROOM. CLICK THE PICTURE FOR LOTS OF IDEAS!



TOTAL PAGEVIEWS



space

Next, measure the depth of the inside of the can (write this down, because you will need this first measurement later on).

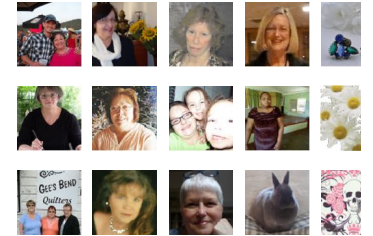


Keeping the tape measure still in the can, drape it over the outside to the bottom of the can. My example: the total inside depth of my can to the outside is 9" plus 1" for seam allowance

30,315,003



Followers (8776) [Next](#)



[Follow](#)

SIGN UP FOR AN EMAIL

Email address...

which equals 10".



Cutting fabric:

The body of the caddy is made from the above measurements. For my example, I cut my fabric for the body 12 1/2" wide x 10" high.

The pocket has a finished height of 3" plus 1 inch for seam, so I cut my fabric 12 1/2" wide by 4" high.



**Karen from Sew M:**

**Follow On**

TRANSLATE THIS BLOG

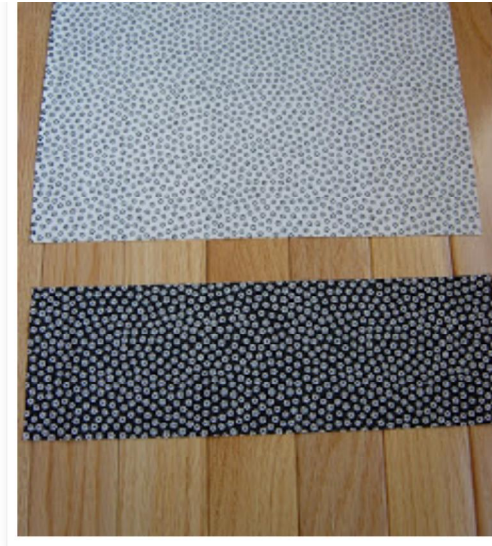
Select Language

Powered by Google Translate

SEARCH FOR SOMETHING  
BOX BELOW

BLOG ARCHIVE

May 2009 (12)



Working on Pocket:

Fold over the top edge (long edge) 3/4".



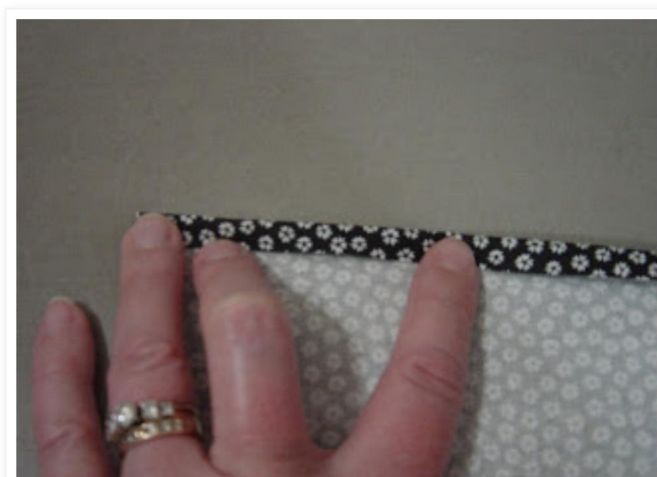
LOOKING FOR SOMETHING  
CLICK A CATEGORY BELOW

[Accuquilt Go](#) (12) [Annie baby](#) (1) [before and afters](#) (2) [Block of the Month Club](#) [blogging tips](#) (64) [bob buckets](#) (4) [business cards](#) (3) (6) [car caddy tutorial](#) (3) [challenges](#) (80) [Christmas Home Tour](#) (8) [coffee filters](#) (2) [commentary](#) [crafting](#) (125) [crafts](#) (10) [decorating](#) (29) [design inspiration](#) (1) [Easter ideas](#) (11) [fabric](#) (10) [tutorial](#) (5) [decorating](#) (8) [family](#) (2) [Friday](#) (51) [friends](#) (20) [furniture](#) (4) [garland](#) (5) [giveaway](#) (42) [grandmother](#) [Halloween](#) (7) [hexagon tutorial](#) [holiday planning](#) (3) [home](#) (5) [ironing board](#) (5) [journaling](#) [organizing](#) (10) [labels](#) (9) [magazine feature](#) (2) [magnetic](#) (3) [mod podge](#) (5) [name badge](#) [reply](#) (6) [organizing](#) [paint chips](#) (4) [painting](#) (7) [pocket](#) [board](#) (5) [pillows](#) (12) [pin](#) (9) [pipes](#) (4) [place cards](#) (4) [placemats](#) (12) [potholders](#) (1)

Iron to set the fold.



Open up and fold over the raw edge into the fold line. Sew with matching thread.

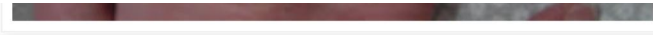


[quilt rulers \(3\)](#) [quilt show](#)  
[recipes \(78\)](#) [recyclin](#)  
[White Swap \(5\)](#) [ribbon \(8\)](#)  
[darn crafty \(221](#)  
[\(10\) sewing \(169](#)  
[sewing kits \(13\)](#) [sewing re](#)  
[\(10\) Sharing on Sunday](#)  
[Snowball Night \(5\)](#) [Soup](#)  
[sponsors \(11\)](#) [spools \(3\)](#) [spra](#)  
[\(4\) swaps \(1\)](#) [tablecloth redo \(3](#)  
[Nester's Club \(5\)](#) [thimbles](#)  
[Thursday \(76\)](#) [thread \(](#)  
[Tips and Tricks \(20\)](#)  
[Tuesday \(234\)](#) [to](#)  
[Valentine's Day \(3\)](#) [wreath \(5](#)

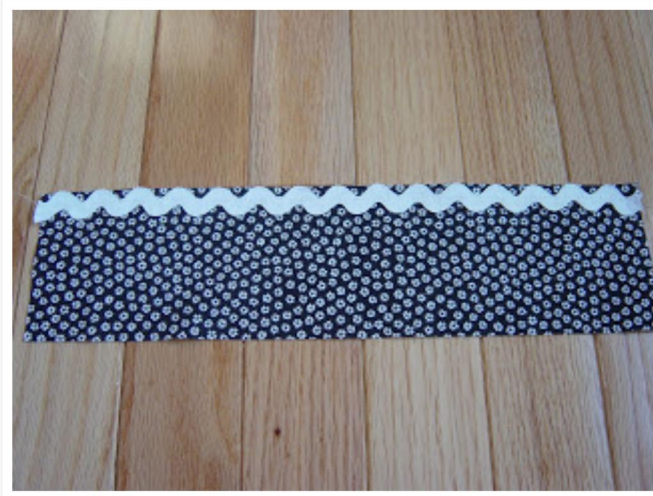


I would just love it if you b  
Sew Many Ways! Click the  
the info.

FAIRIES MARKET



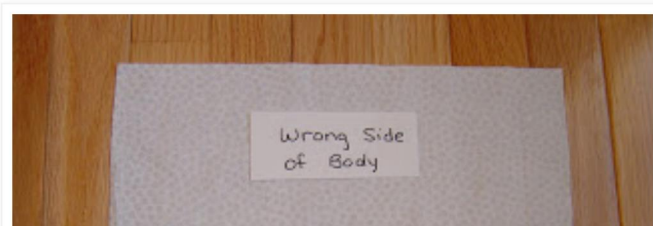
Here you will sew on the optional trim.



ORGANIC COTTON  
PLUS



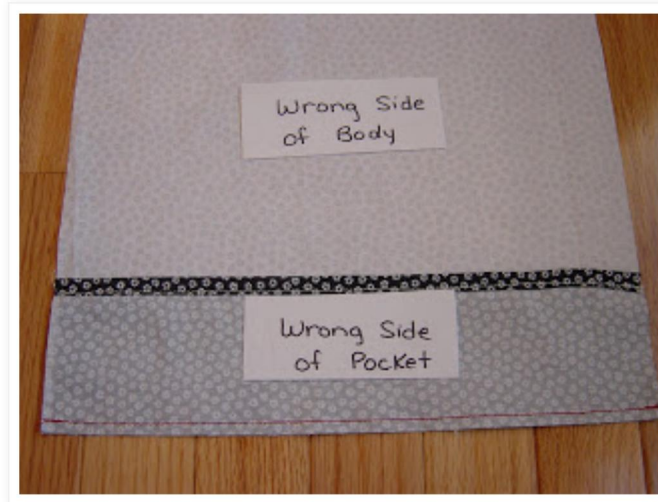
Now, place the body fabric right side **DOWN** with the longer edge (12.5") on the bottom. Place the pocket right side **DOWN** on the wrong side of body fabric. In other words, both right sides are facing down.



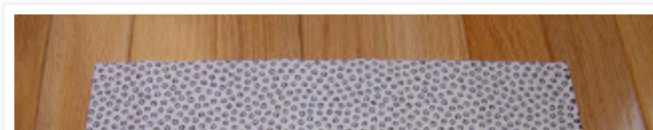




Sew the bottom edge with a 1/4" seam allowance...mine is sewn in red.



Turn body over to the right side and fold up pocket. Press seam.



**BEST BUY**

Samsung - Galaxy 13.3" 4K Ultra HD Touch-Screen Chromebook - Intel Core i5 - 8GB Memory ...

**\$79**

**SAM**

Sho

Ready in with sto

See BestBuy.com for details.

©2021 Best Bu

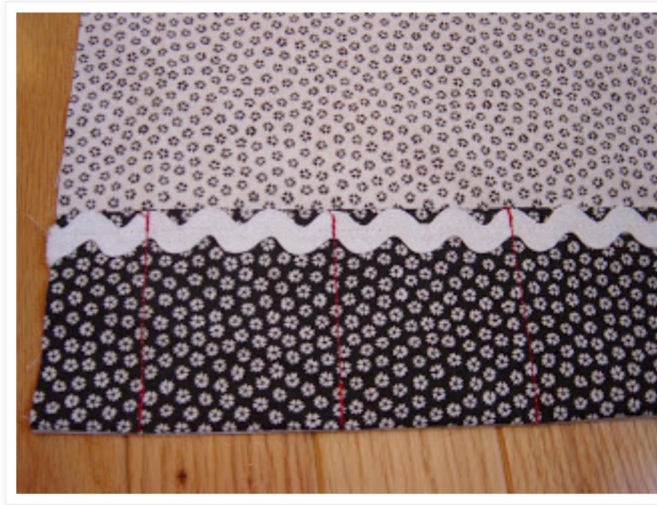


Close up picture of pressed lower edge.



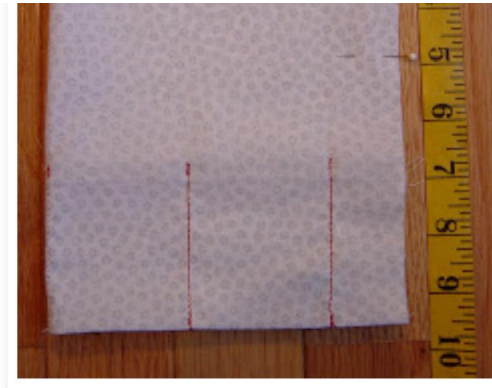
At this point, you will be sewing the seams for each little pocket. This step is totally up to you, because everyone has different things they will be putting into their caddy. Just start at the top of the pocket and sew through all thicknesses until you reach the bottom edge.

Back stitch to secure. Make some wide and some narrow. My pockets hold eye glasses, pens, seam ripper, ruler etc...



Once you have sewn all your pockets, you will need to sew the side seam. Keeping the bottom edge closest to you, fold over the left side over to the right. Pin the top half of the body. Remember the previous measurement of the inside of the can, mine was 4 1/2" in fourth photo...add 1/2" -1" to your measurement and sew down from the top edge.





I sewed mine 5" down from the top edge.



Here's another picture of the full piece.



This next part is not the greatest, but the finished seam is on the back of the caddy against the door, so no one will see it. If you can come up with something better, please let me know and I can pass it on to every one.

At this point, your final piece will have 2 edges at the end of the pockets that are left unfinished. They have to be finished separately, because they have to go over the hook of the cup holder on either side. I just turned my raw edge over twice and sewed down the edge. You could zig zag or serge it too.

The last step is to maybe finish the top edge of the body (the top edge in the picture below). This top edge is the part that goes in the can, so you don't see it. You can hem it, but I just trimmed mine with pinking sheers so it wouldn't fray.



Take that edge, that I pinked, and place that in the can (wrong side of body up against the inside of can) and then fold over the can to reveal the pockets. Here you have it...the perfect little helper while traveling in the car. I use mine for sewing in the car, but it's great for any crafts or crayons for the kids in the back seat. Easily hangs from the door, close by...yet out of the way!! Don't forget to add the pincushion for the handle. It's shown in the first picture.



I hope this tutorial is helpful. It can be difficult to explain certain steps, so if something isn't clear, please feel free to email me with any questions.

Can't wait to see every one's creations!!  
space

Have a great day,

~Karen~